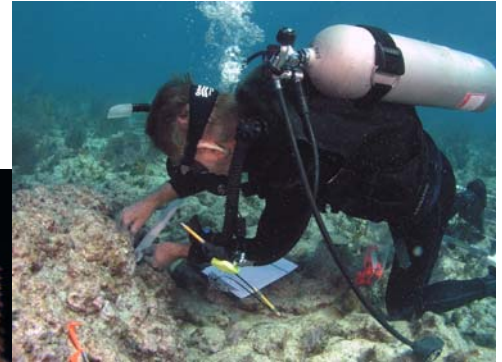


# Florida Keys National Marine Sanctuary Revised Management Plan



December 2007

U.S. Department of Commerce

National Oceanic and  
Atmospheric Administration

National Ocean Service

National Marine Sanctuary Program

This document is the revised management plan for the Florida Keys National Marine Sanctuary. It replaces the management plan that was implemented in 1996 and will serve as the primary management document for the Sanctuary during the next five years.

Comments or questions on this management plan should be directed to:

CDR David A. Score  
Superintendent  
Florida Keys National Marine Sanctuary  
33 East Quay Road  
Key West, Florida 33040  
(305) 809-4700  
David.A.Score@noaa.gov

### **Note to Reader**

In an effort to make this document more user-friendly, we have included references to the Florida Keys National Marine Sanctuary Web site rather than including the entire text of many bulky attachments or appendices that are traditionally included in management plans. Readers who do not have access to the Internet may call the Sanctuary office at (305) 809-4700 to request copies of any documents that are on the Sanctuary's Web site. For readers with Internet access, the Sanctuary's Web site can be found at [floridakeys.noaa.gov](http://floridakeys.noaa.gov).

# ABOUT THIS DOCUMENT

This document is a report on the results of NOAA's five-year review of the strategies and activities detailed in the 1996 *Final Management Plan and Environmental Impact Statement* for the Florida Keys National Marine Sanctuary. It serves two primary purposes: 1) to update readers on the outcomes of successfully implemented strategies - in short, accomplishments that were merely plans on paper in 1996; and, 2) to disseminate useful information about the Sanctuary and its management strategies, activities and products. The hope is that this information, which charts the next 5 years of Sanctuary management, will enhance the communication and cooperation so vital to protecting important national resources.

## *Sanctuary Characteristics*

The Florida Keys National Marine Sanctuary extends approximately 220 nautical miles southwest from the southern tip of the Florida peninsula. The Sanctuary's marine ecosystem supports over 6,000 species of plants, fishes, and invertebrates, including the nation's only living coral reef that lies adjacent to the continent. The area includes one of the largest seagrass communities in this hemisphere. Attracted by this tropical diversity, tourists spend more than thirteen million visitor days in the Florida Keys each year. In addition, the region's natural and man-made resources provide recreation and livelihoods for approximately 80,000 residents.

The Sanctuary is 2,900 square nautical miles of coastal waters, including the 2001 addition of the Tortugas Ecological Reserve. The Sanctuary overlaps four national wildlife refuges, six state parks, three state aquatic preserves and has incorporated two of the earliest national marine sanctuaries to be designated, Key Largo and Looe Key National Marine Sanctuaries. Three national parks have separate jurisdictions, and share a boundary with the Sanctuary. The region also has some of the most significant maritime heritage and historical resources of any coastal community in the nation.

The Sanctuary faces specific threats, including direct human impacts such as vessel groundings, pollution, and overfishing. Threats to the Sanctuary also include indirect human impacts, which are harder to identify but are reflected in coral declines and increases in macroalgae and turbidity. More information about the Sanctuary can be found in this document and at the Sanctuary's Web site.

## *Management Plan Organization*

Within this document, the tools that the Sanctuary uses to achieve its goals are presented in five management divisions: 1) Science; 2) Education, Outreach & Stewardship; 3) Enforcement & Resource Protection; 4) Resource Threat Reduction; and 5) Administration, Community Relations, & Policy Coordination. Each management division contains two or more *action plans*, which are implemented through supporting *strategies* and *activities*. The strategies described in the 1996 *Management Plan* generally retain their designations in this document. As in the 1996 plan, two or more action plans may share a strategy where their goals and aims converge. The 1996 plan can be accessed on the Sanctuary's Web site [floridakeys.noaa.gov](http://floridakeys.noaa.gov)

### *Accomplishments and Highlights*

The Sanctuary's programs and projects have made significant progress since the original management plan was implemented 1996. An overview of these accomplishments is provided in the Introduction. In addition, each action plan contains bulleted lists of accomplishments since the 1996 management plan was adopted.

# Table of Contents

<b>ABOUT THIS DOCUMENT</b> .....	<b>i</b>
TABLE OF CONTENTS .....	iii
ACRONYMS .....	vii
<b>1.0 INTRODUCTION</b> .....	<b>1</b>
1.1 THE NATIONAL MARINE SANCTUARY PROGRAM (NMSP).....	1
1.2 THE FLORIDA KEYS NATIONAL MARINE SANCTUARY (FKNMS) .....	2
1.3 THE MANAGEMENT PLAN REVIEW PROCESS.....	6
1.4 ACCOMPLISHMENTS .....	9
<b>2.0 THE SANCTUARY ENVIRONMENT: A SUBTROPICAL ECOSYSTEM</b> .....	<b>13</b>
2.1 INTRODUCTION.....	13
2.2 LIVING MARINE RESOURCES.....	13
2.3 NON-LIVING MARINE RESOURCES.....	16
2.4 THREATS TO THE ECOSYSTEM .....	17
<b>3.0 ACTION PLANS</b> .....	<b>19</b>
WHAT ARE THE ACTION PLANS IN THIS DOCUMENT?.....	19
IMPLEMENTING ACTION PLANS.....	27
ACTION PLAN IMPLEMENTATION COSTS.....	30
<b>3.1 SANCTUARY SCIENCE</b> .....	<b>31</b>
3.1.1 SCIENCE MANAGEMENT & ADMINISTRATION ACTION PLAN .....	32
<i>Strategy B.11 Issuance of Sanctuary Research Permits</i> .....	35
<i>Strategy W.29 Dissemination of Findings</i> .....	35
<i>Strategy W.32 Maintaining a Technical Advisory Committee</i> .....	37
<i>Strategy W.34 Regional Science Partnerships and Reviews</i> .....	37
<i>Strategy W.35 Data Management</i> .....	39
3.1.2 RESEARCH AND MONITORING ACTION PLAN .....	41
<i>Strategy W.33 Ecological Research and Monitoring</i> .....	47
<i>Strategy Z.6 Marine Zone Monitoring</i> .....	49
<i>Strategy W.36 Conducting Socioeconomic Research</i> .....	51
<i>Strategy F.3 Researching Queen Conch Population Enhancement Methods</i> .....	54
<i>Strategy F.7 Researching Impacts From Artificial Reefs</i> .....	55
<i>Strategy F.6 Fisheries Sampling</i> .....	56
<i>Strategy F.11 Evaluating Fishing Gear/Method Impacts</i> .....	57
<i>Strategy F.15 Assessing Sponge Fishery Impacts</i> .....	58
<i>Strategy W.18 Conducting Pesticide Research</i> .....	58
<i>Strategy W.22 Assessing Wastewater Pollutants Impacts</i> .....	59
<i>Strategy W.23 Researching Other Pollutants and Water Quality Issues</i> .....	60
<i>Strategy W.24 Researching Florida Bay Influences</i> .....	61
<i>Strategy W.21 Developing Predictive Models</i> .....	63
<i>Previous Strategies</i> .....	64
<b>3.2 EDUCATION, OUTREACH, &amp; STEWARDSHIP</b> .....	<b>65</b>
3.2.1 EDUCATION AND OUTREACH ACTION PLAN.....	66
<i>Strategy E.4 Developing Training, Workshops and School Programs</i> .....	69
<i>Strategy E.6 Continuing the Education Working Group</i> .....	71
<i>Strategy E.10 Establishing Public Forums</i> .....	71
<i>Strategy E.11 Participating In Special Events</i> .....	72
<i>Strategy E.1 Printed Product Development and Distribution</i> .....	73
<i>Strategy E.2 Continued Distribution of Audio-Visual Materials</i> .....	76

Strategy E.3	Continued Development of Signs, Displays, Exhibits, and Visitor Centers .....	77
Strategy E.5	Applying Various Technologies .....	80
Strategy E.12	Professional Development of Education and Outreach Staff .....	80
3.2.2	VOLUNTEER ACTION PLAN .....	82
Strategy V.1	Maintaining Volunteer Programs .....	84
Strategy V.2	Working With Other Organization/Agency Volunteer Programs .....	86
Strategy V.3	Supporting Volunteer Activities .....	89
	Previous Strategies .....	91
<b>3.3</b>	<b>ENFORCEMENT &amp; RESOURCE PROTECTION .....</b>	<b>92</b>
3.3.1	REGULATORY ACTION PLAN .....	93
Strategy R.1	Maintain the Existing Permit Program .....	96
Strategy R.1	Maintain the Existing Permit Program .....	96
Strategy R.2	Regulatory Review and Development .....	98
3.3.2	ENFORCEMENT ACTION PLAN .....	104
Strategy B.6	Acquiring Additional Enforcement Personnel .....	110
3.3.3	DAMAGE ASSESSMENT AND RESTORATION ACTION PLAN .....	113
Strategy B.18	Injury Prevention .....	116
Strategy B.19	Implementing DARP Notification And Response Protocols .....	118
Strategy B.20	Damage Assessment And Documentation .....	119
Strategy B.21	Case Management .....	122
Strategy B.22	Habitat Restoration .....	123
Strategy B.23	Data Management .....	127
3.3.4	MARITIME HERITAGE RESOURCES ACTION PLAN .....	129
Strategy MHR.1	MHR Permitting .....	135
Strategy MHR.2	Establishing An MHR Inventory .....	136
Strategy MHR.3	MHR Research and Education .....	138
Strategy MHR.4	Ensuring Permit Compliance through Enforcement .....	139
Strategy MHR.5	Ensuring Interagency Coordination .....	140
<b>3.4</b>	<b>RESOURCE THREAT REDUCTION .....</b>	<b>142</b>
3.4.1	MARINE ZONING ACTION PLAN .....	143
Strategy Z.1	Sanctuary Preservation Areas .....	148
Strategy Z.2	Ecological Reserves .....	151
Strategy Z.3	Special-use Areas .....	155
Strategy Z.4	Wildlife Management Areas .....	158
Strategy Z.5	Existing Management Areas .....	160
3.4.2	MOORING BUOY ACTION PLAN .....	162
Strategy B.15	Mooring Buoy Management .....	165
3.4.3	WATERWAY MANAGEMENT ACTION PLAN .....	168
Strategy B.1	Boat Access .....	172
Strategy B.4	Waterway Management/Marking .....	173
3.4.4	WATER QUALITY ACTION PLAN .....	178
FLORIDA BAY/EXTERNAL INFLUENCE STRATEGIES .....		183
Strategy W.19	Florida Bay Freshwater Flow .....	183
DOMESTIC WASTEWATER STRATEGIES .....		185
Strategy W.3	Addressing Wastewater Management Systems .....	185
Strategy W.5	Developing and Implementing Water Quality Standards .....	188
Strategy W.7	Resource Monitoring of Surface Discharges .....	189
STORMWATER STRATEGIES .....		190
Strategy W.11	Stormwater Retrofitting .....	190
Strategy W.14	Instituting Best Management Practices .....	190
MARINA AND LIVE-ABOARD STRATEGIES .....		192
Strategy B.7	Reducing Pollution Discharges .....	192
Strategy L.1	Elimination of Wastewater Discharge From Vessels .....	193
Strategy L.3	Reducing Pollution From Marina Operations .....	195

LANDFILL STRATEGY .....	197
<i>Strategy L.7 Assessing Solid Waste Disposal Problem Sites</i> .....	197
HAZARDOUS MATERIALS STRATEGIES.....	199
<i>Strategy W.15 HAZMAT Response</i> .....	199
<i>Strategy W.16 Spill Reporting</i> .....	200
<i>Strategy L.10 HAZMAT Handling</i> .....	201
MOSQUITO SPRAYING STRATEGY .....	202
<i>Strategy W.17 Refining the Mosquito Spraying Program</i> .....	202
CANAL STRATEGY .....	203
<i>Strategy W.10 Addressing Canal Water Quality</i> .....	203
<i>Previous Strategies</i> .....	205
<b>3.5 ADMINISTRATION, COMMUNITY RELATIONS AND POLICY COORDINATION.....</b>	<b>206</b>
FUNCTION 1: SANCTUARY ADMINISTRATION.....	207
FUNCTION 2: COMMUNITY RELATIONS .....	213
FUNCTION 3: POLICY DEVELOPMENT AND COORDINATION .....	214
<i>Strategy OP.1 Addressing Administrative Policy Issues</i> .....	219
<i>Strategy OP.2 Addressing Resource Policy Issues</i> .....	220
<i>Strategy OP.3 Addressing Legal Issues</i> .....	220
FUNCTION 4: THE SANCTUARY ADVISORY COUNCIL.....	221
3.5.2 EVALUATION ACTION PLAN .....	223
<i>Strategy EV.1 Measuring Sanctuary Performance Over Time</i> .....	225
<b>APPENDICES .....</b>	<b>236</b>
APPENDIX A - THE NATIONAL MARINE SANCTUARIES ACT.....	237
APPENDIX B - THE FLORIDA KEYS NATIONAL MARINE SANCTUARY AND PROTECTION ACT.....	251
APPENDIX C - FKNMS REGULATIONS .....	270
APPENDIX D - FKNMS DESIGNATION DOCUMENT .....	323
APPENDIX E - FKNMS ADVISORY COUNCIL (NOVEMBER 2001).....	330
APPENDIX F - AGREEMENTS FOR THE INTEGRATED MANAGEMENT OF THE FLORIDA KEYS NATIONAL MARINE SANCTUARY .....	335
APPENDIX G - VESSEL OPERATIONS/PWC MANAGEMENT REGULATORY ALTERNATIVES .....	339
APPENDIX H – PUBLIC COMMENTS AND RESPONSES .....	341

## List of Figures

Figure 1.1	The National Marine Sanctuary System .....	1
Figure 1.2	The Florida Keys National Marine Sanctuary Boundaries.....	5
Figure 1.3	Reef groundings of ships greater than 50m in length before and after the creation of the ATBA. ....	9
Figure 1.4	FKNMS boundary, ATBA and PSSA .....	10
Figure 3.1	NMSP Performance Evaluation Logic Model .....	225

## List of Tables

Table 3.0	Crosswalk of 1996 Management Plan and 2006 Revised Management Plan Action Plans and Strategies.....	20
Table 3.1	Action Strategy Implementation Over Five Years Under Three Funding Scenarios.....	27
Table 3.2	Estimated costs of the Science Management and Administration Action Plan .....	34
Table 3.3	Estimated costs of the Research and Monitoring Action Plan .....	45
Table 3.4	Estimated costs of the Education and Outreach Action Plan .....	68
Table 3.5	Estimated costs of the Volunteer Action Plan .....	83
Table 3.6	Estimated costs of the Regulatory Action Plan.....	95
Table 3.7	Estimated costs of the Enforcement Action Plan .....	109
Table 3.8	Estimated costs of the Damage Assessment and Restoration Action Plan.....	115
Table 3.9	Estimated costs of the Maritime Heritage Resources Action Plan .....	134
Table 3.10	Estimated costs of the Marine Zoning Action Plan.....	147
Table 3.11	Criteria for the Creation and Establishment of the Tortugas Ecological Reserve.....	152
Table 3.12	Estimated costs of the Mooring Buoy Action Plan. ....	164
Table 3.13	Estimated costs of the Waterway Management Action Plan.....	171
Table 3.14	Estimated costs of the Water Quality Action Plan.....	181
Table 3.15	Estimated costs of the Operations Action Plan/Policy Development and Coordination Function.....	217
Table 3.16	Estimated costs of the Evaluation Action Plan.....	224
Table 3.17	Science Management and Administration Action Plan Performance Measures .....	227
Table 3.18	Science Research and Monitoring Action Plan Performance Measures.....	221
Table 3.19	Education and Outreach Action Plan Performance Measures .....	221
Table 3.20	Volunteer Action Plan Performance Measures .....	222
Table 3.21	Regulatory Action Plan Performance Measures.....	222
Table 3.22	Enforcement Action Plan Performance Measures .....	223
Table 3.23	Damage Assessment & Restoration Program Action Plan Performance Measures.....	223
Table 3.24	Maritime Heritage Resources Action Plan Performance Measures .....	224
Table 3.25	Marine Zoning Action Plan Performance Measures.....	224
Table 3.26	Mooring Buoy Action Plan Performance Measures .....	226
Table 3.27	Waterway Management Action Plan Performance Measures.....	226
Table 3.28	Water Quality Action Plan Performance measures.....	227
Table 3.29	Operations Action Plan Administration Function Performance Measures.....	227
Table 3.30	Operations Action Plan Sanctuary Advisory Council Performance Measures .....	228

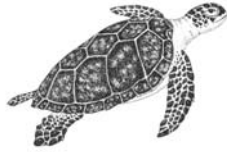


# Acronyms

ACHP	Advisory Council on Historic Preservation
AGRRA	Atlantic and Gulf Rapid Reef Assessment Program
ASA	Abandoned Shipwreck Act
ATBA	Areas to Be Avoided
AWT	Advanced Wastewater Treatment
CAD	Computer Automated Dispatch
CERCLA	Comprehensive Environmental Response, Compensation, and Liability Act
CERP	Comprehensive Everglades Restoration Plan
CFR	Code of Federal Regulations
CRCP	Coral Reef Conservation Program
DARP	Damage Assessment and Restoration Program
DEP	Florida Department of Environmental Protection
DTNP	Dry Tortugas National Park
EIS	Environmental Impact Statement
EPA	U.S. Environmental Protection Agency
ESA	Endangered Species Act
F.S.	Florida Statutes
FAC	Florida Administrative Code
FDACS	Florida Department of Agriculture and Consumer Services
FDCA	Florida Department of Community Affairs
FDHR	Florida Division of Historical Resources
FDOT	Florida Department of Transportation
FKNMS	Florida Keys National Marine Sanctuary
FKNMSPA	Florida Keys National Marine Sanctuary Protection Act
FPS	Florida Park Service
FR	Federal Register
FWC	Florida Fish and Wildlife Conservation Commission
FWRI	Fish and Wildlife Research Institute
FY	Federal Fiscal Year
GIS	Geographic Information System
GMD	Growth Management Division (Monroe County)
GMFMC	Gulf of Mexico Fishery Management Council
GPS	Global Positioning System
HAZMAT	Hazardous Materials
ICS	Incident Command Structure
ICW	Intra-coastal Waterway
IMO	International Maritime Organization
MBTA	Migratory Bird Treaty Act
MEERA	Marine Ecosystem Event Response and Assessment
MHR	Maritime Heritage Resources
MMPA	Marine Mammal Protection Act
MMS	Minerals Management Service
MOA	Memorandum of Agreement
MOU	Memorandum of Understanding

MRD	Marine Resources Division (Monroe County)
NCCOS	National Centers for Coastal Ocean Science
NEPA	National Environmental Policy Act
NGO	Non-governmental Organization
NHPA	National Historic Preservation Act
NMFS	National Marine Fisheries Service
NMS	National Marine Sanctuary
NMSA	National Marine Sanctuary Act
NMSF	National Marine Sanctuary Foundation
NMSP	National Marine Sanctuary Program
NOAA	National Oceanic and Atmospheric Administration
NOAA/OLE	NOAA Office of Law Enforcement
NOS	National Ocean Service
NPDES	National Pollutant Discharge Elimination System
NPS	National Park Service
NRDA	Natural Resource Damage Assessment Claims
NURC	National Undersea Research Center
OFW	Outstanding Florida Waters
OSDS	On-Site Disposal System
OSTDS	On-Site Sewage Treatment and Disposal System
PREP	National Prepared for Response Exercise Program
PSSA	Particularly Sensitive Sea Area
RECON	Reef Ecosystem Condition Program
REEF	Reef Environmental Education Foundation
RNA	Research Natural Area
RSMAS	University of Miami/Rosenstiel School of Marine and Atmospheric Science
SAFMC	South Atlantic Fishery Management Council
SAP	Science Advisory Panel
SAV	Submerged Aquatic Vegetation
SCR	Submerged Cultural Resources
SEFSC	Southeast Fisheries Science Center
SFWMD	South Florida Water Management District
SHIELDS	Sanctuary Hazardous Incident Emergency Logistics Database System
SPA	Sanctuary Preservation Area
SWIM	Surface Water Improvement and Management Act
SWM	Stormwater Management
TAC	Technical Advisory Committee
TNC	The Nature Conservancy
USACE	U.S. Army Corps of Engineers
USCG	U.S. Coast Guard
USDOC	U.S. Department of Commerce
USDOI	U.S. Department of Interior
USDOS	U.S. Department of State
USDOT	U.S. Department of Transportation
USFWS	U.S. Fish and Wildlife Service
USGS	U.S. Geological Survey
WAMS	Waterway Assessment and Marking System

WMA Wildlife Management Area  
WQPP Water Quality Protection Program  
WQSC Water Quality Steering Committee



# APPENDICES

APPENDIX A	THE NATIONAL MARINE SANCTUARIES ACT .....	230
APPENDIX B	THE FLORIDA KEYS NATIONAL MARINE SANCTUARY AND PROTECTION ACT .....	254
APPENDIX C	FKNMS REGULATIONS .....	266
APPENDIX D	FINAL FKNMS DESIGNATION DOCUMENT .....	319
APPENDIX E	FKNMS ADVISORY COUNCIL AND WORKING GROUP MEMBERSHIP .....	326
APPENDIX F	AGREEMENT S FOR THE INTEGRATED MANAGEMENT OF THE FLORIDA KEYS NATIONAL MARINE SANCTUARY .....	331
APPENDIX G	VESSEL OPERATIONS/PWC MANAGEMENT REGULATORY ALTERNATIVES.....	335
APPENDIX H	PUBLIC COMMENTS AND RESPONSES .....	337

## Appendix D - FKNMS Designation Document

### *Article I. Designation and Effect*

On November 16, 1990, the Florida Keys National Marine Sanctuary and Protection Act, Pub. L. 101-605 (16 U.S.C. 1433 note), became law. That Act designated an area of waters and submerged lands, including the living and nonliving resources within those waters, as described therein, as the Florida Keys National Marine Sanctuary (Sanctuary). By this revised Designation Document, the boundary of the Sanctuary is expanded to include important coral reef resources and resources in two areas known as Sherwood Forest and Riley's Hump, just beyond the westernmost portion of the statutory Sanctuary boundary.

Section 304 of the National Marine Sanctuaries Act (NMSA), 16 U.S.C. 1431 *et seq.*, authorizes the Secretary of Commerce to issue such regulations as are necessary and reasonable to implement the designation, including managing and protecting the conservation, recreational, ecological, historical, scientific, educational, cultural, archaeological or aesthetic resources and qualities of a national marine sanctuary. Section 1 of Article IV of this Designation Document lists activities of the type that are presently being regulated or may have to be regulated in the future, in order to protect Sanctuary resources and qualities. Listing in section 1 does not mean that a type of activity will be regulated in the future, however, if a type of activity is not listed, it may not be regulated, except on an emergency basis, unless section 1 is amended, following the procedures for designation of a sanctuary set forth in paragraphs (a) and (b) of section 304 of the NMSA, to include the type of activity.

Nothing in this Designation Document is intended to restrict activities that do not cause an adverse effect on the resources or qualities of the Sanctuary or on Sanctuary property or that do not pose a threat of harm to users of the Sanctuary.

### *Article II. Description of the Area*

The Florida Keys National Marine Sanctuary boundary encompasses approximately 2900 nm<sup>2</sup> (9,800 square kilometers) of coastal and ocean waters, and the submerged lands thereunder, surrounding the Florida Keys in Florida. The easternmost point of the Sanctuary is the northeasternmost point of Biscayne National Park and the westernmost point is approximately 15 kilometers to the west of the western boundary of Dry Tortugas National Park, a linear distance of approximately 335 kilometers. The contiguous area boundary on the Atlantic Ocean side of the Florida Keys runs south from Biscayne National Park generally following the 300-foot isobath, curving in a southwesterly direction along the Florida Keys archipelago until south of the Dry Tortugas. The contiguous area boundary on the Gulf of Mexico side of the Florida Keys runs from this southern point in a straight line to the northwest and then when directly west of the Dry Tortugas in a straight line to the north. The boundary then turns to the east and slightly south and follows a straight line to just west of Key West and then turns to the northeast and follows a straight line parallel to the Florida Keys approximately five miles to the south, and then follows the Everglades National Park boundary until Division Point where the boundary then follows the western shore of Manatee Bay, Barnes Sound, and Card Sound. The boundary then follows the southern boundary of Biscayne National Park and up its eastern boundary until its northeasternmost point. Starting just to the east of the most western boundary line of the contiguous portion of the Sanctuary there is a vertical rectangular shape area of 60 nm<sup>2</sup> just to the south.

The shoreward boundary of the Sanctuary is the mean high-water mark except around the Dry Tortugas where it is the boundary of the Dry Tortugas National Park. The Sanctuary boundary encompasses the entire Florida coral reef tract, all of the mangrove islands of the Florida Keys, and some of the sea grass meadows of the Florida Keys. The precise boundary of the Sanctuary is set forth at the end of this Designation Document.

*Article III. Characteristics of the Area That Give it Particular Value*

The Florida Keys extend approximately 223 miles southwest from the southern tip of the Florida peninsula. Adjacent to the Florida Keys land mass are located spectacular unique, nationally significant marine environments, including sea grass meadows, mangrove islands, and extensive living coral reefs. These marine environments support rich biological communities possessing extensive conservation, recreational, commercial, ecological, historical, research, educational, and aesthetic values which give this area special national significance. These environments are the marine equivalent of tropical rain forests in that they support high levels of biodiversity, are fragile and easily susceptible to damage from human activities, and possess high value to humans if properly conserved. These marine environments are subject to damage and loss of their ecological integrity from a variety of sources of disturbance.

The Florida Keys are a limestone island archipelago. The Keys are located at the southern edge of the Florida Plateau, a large carbonate platform made of a depth of up to 7000 meters of marine sediments, which have been accumulating for 150 million years and which have been structurally modified by subsidence and sea level fluctuation. The Keys region is generally divided into five distinct areas: the Florida reef tract, one of the world's largest coral reef tracts and the only barrier reef in the United States; Florida Bay, described as an active lime-mud factory because of the high carbonate content of its silts and muds; the Southwest Continental Shelf; the Straits of Florida; and the Keys themselves.

The 2.5 million-acre Sanctuary contains one of North America's most diverse assemblages of terrestrial, estuarine, and marine fauna and flora, including, in addition to the Florida reef tract, thousands of patch reefs, one of the world's largest sea grass communities covering 1.4 million acres, mangrove fringed shorelines, mangrove islands, and various hardbottom habitats. These diverse habitats provide shelter and food for thousands of species of marine plants and animals, including more than 50 species of animals identified under Federal or State law, as endangered or threatened. The Keys were at one time a major seafaring center for European and American trade routes to the Caribbean, and the submerged cultural and historic resources (*i.e.*, shipwrecks) abound in the surrounding waters. In addition, the Sanctuary may contain substantial archaeological resources of pre-European cultures.

The uniqueness of the marine environment draws multitudes of visitors to the Keys. The major industry in the Florida Keys is tourism, including activities related to the Keys' marine resources, such as dive shops, charter fishing and dive boats and marinas, as well as hotels and restaurants. The abundance of the resources also supports a large commercial fishing employment sector.

The number of visitors to the Keys grows each year, with a concomitant increase in the number of residents, homes, jobs, and businesses. As population grows and the Keys accommodate ever-increasing resource use pressures, the quality and quantity of Sanctuary resources are increasingly threatened. These pressures require coordinated and comprehensive monitoring and researching of the Florida Keys' region.

*Article IV. Scope of Regulations*

*Section 1. Activities Subject to Regulation*

The following activities are subject to regulation under the NMSA, either throughout the entire Sanctuary or within identified portions of it or, as indicated, in areas beyond the boundary of the Sanctuary, to the extent necessary and reasonable. Such regulation may include prohibitions to ensure the protection and management of the conservation, recreational, ecological, historical, scientific, educational, cultural, archaeological or aesthetic resources and qualities of the area. Because an activity is listed here does not mean that such activity is being or will be regulated. All listing means is that the activity can be regulated, after compliance with all applicable regulatory laws, without going through the designation procedures required by paragraphs (a) and (b) of section 304 of the NMSA, 16 U.S.C. 1434(a) and (b). Further, no regulation issued under the authority of the NMSA except an emergency regulation issued with the approval of the Governor of the State of Florida may take effect in the area of the Sanctuary lying within the seaward boundary of the State of Florida if the Governor of the State of Florida certifies to the Secretary of Commerce that such regulation is unacceptable within the forty-five-day review period specified in NMSA. Detailed definitions and explanations of the following “activities subject to regulation” appear in the Sanctuary Management Plan:

1. Exploring for, developing, or producing oil, gas, and/or minerals (*e.g.*, clay, stone, sand, gravel, metalliferous ores, nonmetalliferous ores) in the Sanctuary;
2. Touching, climbing on, taking, removing, moving, collecting, harvesting, injuring, destroying or causing the loss of, or attempting to take, remove, move, collect, harvest, injure, destroy or cause the loss of, coral in the Sanctuary;
3. Drilling into, dredging or otherwise altering the seabed of the Sanctuary, except incidental to allowed fishing and boating practices or construction activities permitted by county, state or federal regulatory agencies; or constructing, placing or abandoning any structure, material or other matter on the seabed of the Sanctuary, except as authorized by appropriate permits or incidental to allowed fishing practices;
4. Discharging or depositing, within or beyond the boundary of the Sanctuary, any material that subsequently enters the Sanctuary and injures a Sanctuary resource or quality;
5. Operating water craft in the Sanctuary
  - (a) in a manner that could injure coral, hardbottoms, seagrass, mangroves, or any other immobile organism attached to the seabed,
  - (b) in a manner that could injure or endanger the life of divers, fishermen, boaters or other users of the Sanctuary,
  - (c) in a manner that could disturb marine mammals, marine reptiles, or bird rookeries;
6. Diving or boating activities in the Sanctuary including anchoring that could harm Sanctuary resources, Sanctuary property, or other users of the Sanctuary;
7. Stocking within the Sanctuary or releasing within the Sanctuary or from beyond the boundary of the Sanctuary, native or exotic species of plant, invertebrate, fish, amphibian or mammals;
8. Defacing, marking, or damaging in any way or displacing, removing, or tampering with any markers, signs, notices, placards, navigational aids, monuments, stakes, posts, mooring buoys, boundary buoys, trap buoys, or scientific equipment in the Sanctuary;

9. Removing, injuring, preserving, curating, and managing historic resources within the Sanctuary without all required state and/or federal permits;
10. Taking, removing, moving, catching, collecting, harvesting, feeding, injuring, destroying, or causing the loss of, or attempting to take, remove, move, catch, collect, harvest, feed, injure, destroy or cause the loss of any marine mammal, marine reptile, or bird within the Sanctuary, without all required state and/or federal permits;
11. Possessing, moving, harvesting, removing, taking, damaging, disturbing, breaking, cutting, spearing, or otherwise injuring any marine invertebrate, fish, bottom formation, algae, seagrass or other living or dead organism, including shells, or attempting any of these activities in any area of the Sanctuary designated as an Existing Management Area, Wildlife Management Area, Ecological Reserve, Sanctuary Preservation Area, or Special-Use Area;
12. Carrying or possessing specified fishing gear in any area of the Sanctuary designated as an Existing Management Area, Wildlife Management Area, Ecological Reserve, Sanctuary Preservation Area, or Special-Use Area except for passage through without interruption;
13. Entering and leaving any Wildlife Management Area, Ecological Reserve, Sanctuary Preservation Area, or Special-Use Area except for passage through without interruption or for law enforcement purposes;
14. Harvesting marine life as defined and regulated by the State of Florida under its marine life rule;
15. Mariculture;
16. Possessing or using explosives or releasing electrical charges or substances poisonous or toxic to fish and other living marine resources within the Sanctuary or beyond the boundary of the Sanctuary (possession of ammunition shall not be considered possession of explosives);
17. Removing and disposing of lost, out-of-season, or illegal gear discovered within the Sanctuary; removing of vessels grounded, lodged, stuck or otherwise perched on coral reefs, hardbottom, or seagrasses within the Sanctuary; and removing and disposing of derelict or abandoned vessels or other vessels within the Sanctuary for which ownership cannot be determined or for which the owner takes no action for removal or disposal; and salvaging and towing of vessels abandoned or disabled within the Sanctuary vessels or of vessels within the Sanctuary otherwise needing salvaging or towing; and
18. Interfering with, obstructing, delaying or preventing an investigation, search, seizure or deposition of seized property in connection with enforcement of the NMSA or any regulation or permit issued under the NMSA.

### *Section 2. Emergency Regulation*

Where necessary to prevent or minimize the destruction of, loss of, or injury to a Sanctuary resource or quality; or to minimize the imminent risk of such destruction, loss or injury, any activity, including any not listed in Section 1 of this article, is subject to immediate temporary regulation, including prohibition. However, no such regulation may take effect in any area of the Sanctuary lying within the seaward boundary of the State of Florida without the approval of the Governor of the State of Florida.



**Article V. Effect on Leases, Permits, Licenses, and Rights**

Pursuant to paragraph (c)(1) of section 304 of the NMSA, 16 U.S.C. 1434(c)(1), no valid lease, permit, license, approval or other authorization issued by any federal, State, or local authority of competent jurisdiction, or any right of subsistence use or access, may be terminated by the Secretary of Commerce, or his or her designee, as a result of a designation, or as a result of any sanctuary regulation, if such authorization or right was in effect on the effective date of the designation (November 16, 1990 with respect to the statutory Sanctuary boundary; January 17, 2001 with respect to the revision to the Sanctuary boundary expansion made by this Revised Designation Document).

In no event may the Secretary of Commerce or his or her designee issue a permit authorizing, or otherwise approving: (1) the exploration for, development of, or production of oil, gas, or minerals within the Sanctuary; or (2) the disposal of dredged materials within the Sanctuary (except by certification in accordance with applicable National Marine Sanctuary Program regulations of valid authorizations in existence on the effective date of Sanctuary designation). Any purported authorizations issued by other authorities after the effective date of Sanctuary designation for any of these activities within the Sanctuary shall be invalid.

*Article VI. Alteration of this Designation*

The terms of designation, as defined in paragraph (a) of section 304 of the NMSA, 16 U.S.C. 1434(a), may be modified only by the procedures outlined in paragraphs (a) and (b) of section 304 of the NMSA, 16 U.S.C. 1434(a) and (b), including public hearings, consultation with interested federal, state, and local government agencies, review by the appropriate Congressional committees, review by the Governor of the State of Florida, and approval by the Secretary of Commerce, or his or her designee. No designation, term of designation, or implementing regulation may take effect in the area of the Sanctuary lying within the seaward boundary of the State of Florida if the Governor of the State of Florida certifies to the Secretary of Commerce that such designation or term of designation regulation is unacceptable within the forty-five-day review period specified in NMSA.

*Florida Keys National Marine Sanctuary Boundary Coordinates (based on North American datum of 1983)*

The boundary of the Florida Keys National Marine Sanctuary –

- (a) begins at the northeasternmost point of Biscayne National Park located at a point approximately 25 degrees 39 minutes north latitude, 80 degrees 05 minutes west longitude, then runs eastward to the point located at 25 degrees 39 minutes north latitude, 80 degrees 04 minutes west longitude; and
- (b) then runs southward and connects in succession the points at the following coordinates:
  - (i) 25 degrees 34 minutes north latitude, 80 degrees 04 minutes west longitude,
  - (ii) 25 degrees 28 minutes north latitude, 80 degrees 05 minutes west longitude,
  - (iii) 25 degrees 21 minutes north latitude, 80 degrees 07 minutes west longitude, and
  - (iv) 25 degrees 16 minutes north latitude, 80 degrees 08 minutes west longitude;
- (c) then runs southwesterly and connects in succession the points at the following coordinates:
  - (i) 25 degrees 07 minutes north latitude, 80 degrees 13 minutes west longitude,
  - (ii) 24 degrees 57 minutes north latitude, 80 degrees 21 minutes west longitude,
  - (iii) 24 degrees 39 minutes north latitude, 80 degrees 52 minutes west longitude,

- (iv) 24 degrees 30 minutes north latitude, 81 degrees 23 minutes west longitude,
  - (v) 24 degrees 25 minutes north latitude, 81 degrees 50 minutes west longitude,
  - (vi) 24 degrees 22 minutes north latitude, 82 degrees 48 minutes west longitude,
  - (vii) 24 degrees 37 minutes north latitude, 83 degrees 06 minutes west longitude,
  - (viii) 24 degrees 46 minutes north latitude, 83 degrees 06 minutes west longitude,
  - (ix) 24 degrees 46 minutes north latitude, 82 degrees 54 minutes west longitude,
  - (x) 24 degrees 44 minutes north latitude, 81 degrees 55 minutes west longitude,
  - (xi) 24 degrees 51 minutes north latitude, 81 degrees 26 minutes west longitude, and
  - (xii) 24 degrees 55 minutes north latitude, 80 degrees 56 minutes west longitude;
- (d) then follows the boundary of Everglades National Park in a southerly then northeasterly direction through Florida Bay, Buttonwood Sound, Tarpon Basin, and Blackwater Sound;
- (e) after Division Point, then departs from the boundary of Everglades National Park and follows the western shoreline of Manatee Bay, Barnes Sound, and Card Sound;
- (f) then follows the southern boundary of Biscayne National Park to the southeasternmost point of Biscayne National Park; and
- (g) then follows the eastern boundary of Biscayne National Park to the beginning point specified in paragraph (a).

The shoreward boundary of the Florida Keys National Marine Sanctuary is the mean high-water mark except around the Dry Tortugas where the boundary is conterminous with that of the Dry Tortugas National Park, formed by connecting in succession the points at the following coordinates:

- (i) 24 degrees 34 minutes 0 seconds north latitude, 82 degrees 54 minutes 0 seconds west longitude;
- (ii) 24 degrees 34 minutes 0 seconds north latitude, 82 degrees 58 minutes 0 seconds west longitude;
- (iii) 24 degrees 39 minutes 0 seconds north latitude, 82 degrees 58 minutes 0 seconds west longitude;
- (iv) 24 degrees 43 minutes 0 seconds north latitude, 82 degrees 54 minutes 0 seconds west longitude;
- (v) 24 degrees 43 minutes 32 seconds north latitude, 82 degrees 52 minutes 0 seconds west longitude;
- (vi) 24 degrees 43 minutes 32 seconds north latitude, 82 degrees 48 minutes 0 seconds west longitude;
- (vii) 24 degrees 42 minutes 0 seconds north latitude, 82 degrees 46 minutes 0 seconds west longitude;
- (viii) 24 degrees 40 minutes 0 seconds north latitude, 82 degrees 46 minutes 0 seconds west longitude;
- (ix) 24 degrees 37 minutes 0 seconds north latitude, 82 degrees 48 minutes 0 seconds west longitude; and
- (x) 24 degrees 34 minutes 0 seconds north latitude, 82 degrees 54 minutes 0 seconds west longitude.

The Florida Keys National Marine Sanctuary also includes the area located within the boundary formed by connecting in succession the points at the following coordinates;

- (i) 24 degrees 33 minutes north latitude, 83 degrees 09 minutes west longitude,
- (ii) 24 degrees 33 minutes north latitude, 83 degrees 05 minutes west longitude,

- (iii) 24 degrees 18 minutes north latitude, 83 degrees 05 minutes west longitude,
- (iv) 24 degrees 18 minutes north latitude, 83 degrees 09 minutes west longitude, and
- (v) 24 degrees 33 minutes north latitude, 83 degrees 09 minute west longitude.